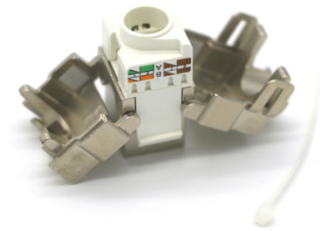


EPS Code 1012231



### Product Specifications

Product Type	Modular Jack
Installation Temperature	-60 °C to +80 °C
ANSI-TIA Category	6A
Cable type	shielded
Installation temperature	-60 °C to +80 °C
Rack unit	n/a
Total ports	n/a
ROHS compliant	yes
Wiring	T568A/T568B
IDC accept	22-26 AWG
Housing	High-impact Flame Retardant Polycarbonate,UL94V-0
Dielectric Withstand Voltage	150 VAC

### Ordering Information

Color	grey
Packaging Quantity	1

További termékeink >>